



# Horningsham

## Primary School



Together we learn



Together  
we learn



**Artsmark  
Platinum Award**  
Awarded by Arts  
Council England



# Welcome



Horningsham is a happy, vibrant and creative primary school where we aim to create a secure and lively environment in which each child can grow to their full potential. It is the combined effort of all concerned that makes our school such a happy and successful one.

We hope you will become an active part of your child's education and that we can maintain a close working relationship between school and home.

## Foreword from Alexander Thynne, 7<sup>th</sup> Marquess of Bath

Living in Corsley as I did when I was a child, there was never a chance that I could attend Horningsham Primary School; but I certainly sent my two children there. It played such an important part in their early lives; a building that was architecturally exciting, with an atmosphere of extended family which took them into its formative embrace.

Prior to its construction there had been a variety of very small schools within the village, but this was the first occasion that one had been created upon a purpose-built site. This was in 1844 at the instigation of Harriet, the third Marchioness; and there was an extra classroom added in 1893. Harriet was my great-great-grandmother, but the school took its name from her son, John Alexander, the 4<sup>th</sup> Marquess, who assumed the onerous duties as head of the family at the tender age of six. It was of course from him that I derive my own name, although my age was ten times greater than his before I was required to assume the same mantle of responsibility. Both Lenka and Ceawlin have the memories of their schooldays in Horningsham indelibly printed upon their minds.

The existence of such a school in our midst is a real asset to the community.

Long may it survive!

# Horningsham

The school is set in one of the most beautiful villages in Wiltshire, overlooking the valley and House of Longleat. The school was originally founded by the Thynne family and was once referred to as the Lord Bath School. It has always been linked with the Longleat Estate and maintains these links with the current 8<sup>th</sup> Marquess and Marchioness of Bath.

The school plays an important part in the life of the village. It benefits from a great deal of support from the local community and has many opportunities to contribute to it as well. In this way our school family is extended to include the support and friendship of many people who have the school's welfare at heart.

The building is 'listed' and is of great character. There are three classrooms, a library, office, cloakrooms and kitchen. A mobile classroom was added in February 2003 and we have three classrooms in our School House for group work and as an additional classroom space for our upper key stage 2 children.

The grounds are very attractive and provide opportunities for both play and outdoor learning. There is an adventure playground, hard surface playground, and a secret garden with a pond and orchard and we make full use of the surrounding village and Longleat Estate.





The children are currently organised into three classes. In all classes, a variety of teaching approaches are employed. Children are sometimes taught in groups and sometimes as a whole class. Those pupils who need extra help either because they are exceptionally able or they are experiencing difficulties are identified and supported to achieve their best.



## Robins Class: Reception/Year One.

Children start full time in this class from September. Summer born children have the option of starting part time until Christmas and then full time in January. They have an outdoor learning area with a canopy so that they can work in and out of the classroom all year round.



## Woodpeckers Class: Year Two/Year Three.

Woodpeckers are based in the main building, but work in the school grounds as much as possible; weather permitting! Pupils are involved in the Key Stage One National Assessment tests at the end of Year Two.



## Owls Class: Year Four/Year Five and Year Six.

The children in Owls benefit from lots of opportunities to visit and work with specialist teachers or visitors. Responsibilities are given to children from year 4 with leadership positions awarded to individuals as they enter year 6 (e.g. Head girl/boy)



## Year 6 Arrangements:

At the end of Year Six there are National Assessment tests for the end of Key Stage Two. There are many opportunities for linked activities with other schools in the cluster. Such events help to make the next step in education seem less daunting. In addition, the local secondary schools arrange a transfer programme for the Year 6 pupils.



## Staffing

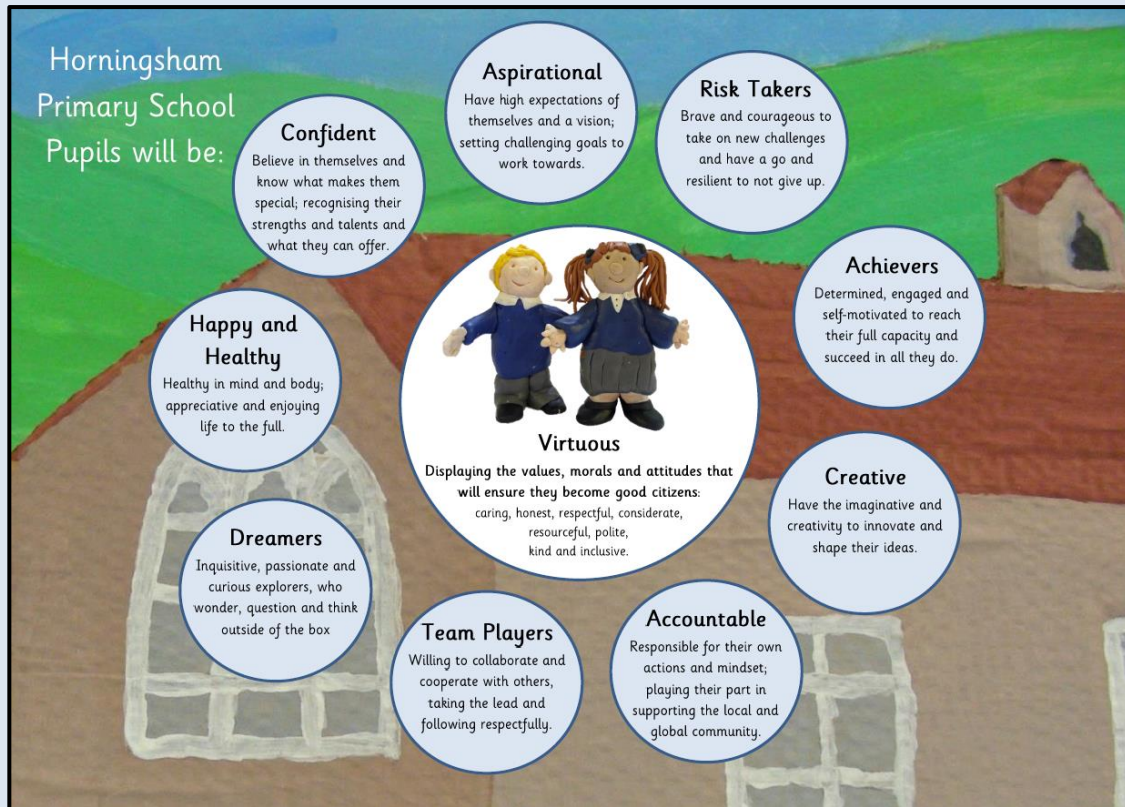
Classes are taught by their Class Teacher for the majority of the time. Some specialist teaching occurs in French, RE and PE, such as PH Sports, who provide a wide range of sports with all classes each week.



## Teams

Each child is a member of one of our four teams; Bowood, Longleat, Stourhead and Wilton. They work together on projects and earn team points for great effort, manners and positive mindset.

# Our Vision and Values



We have clear aspirations for our pupils that are central to how we teach and work with each individual. Central to our aims for each child is to be virtuous; developing the key qualities and healthy attitudes to become respectful courteous and kind in all they do.

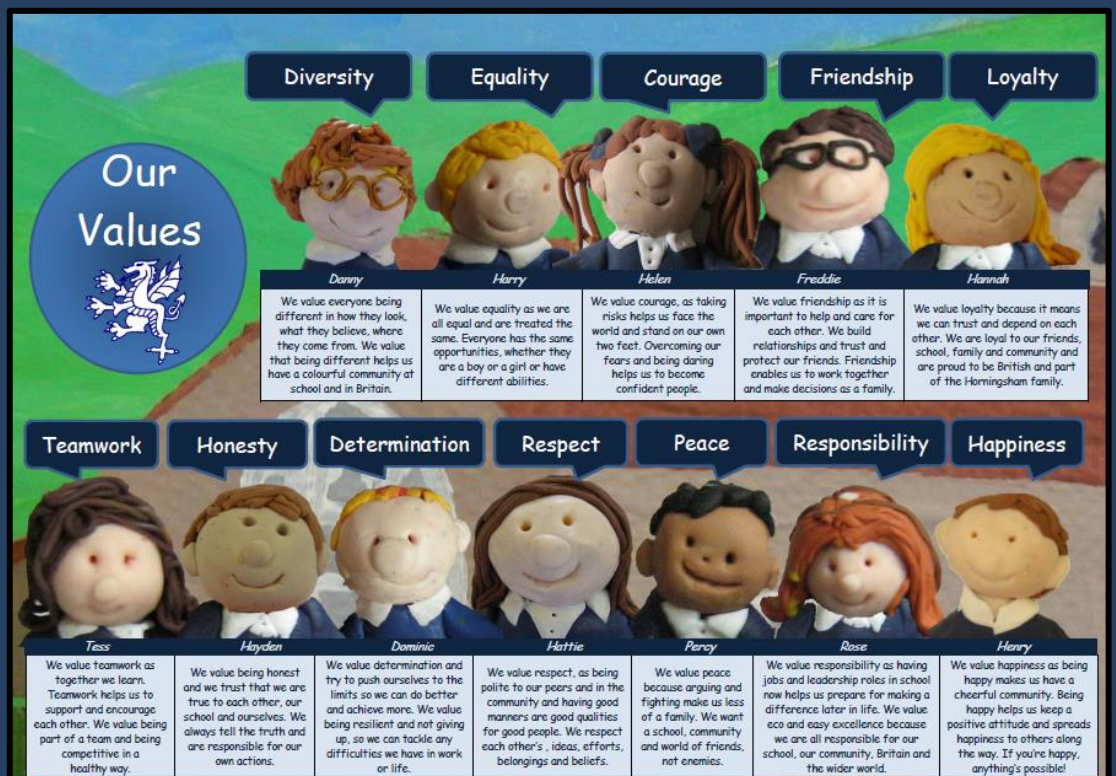
## Our Mission Statement:

We are a successful, community school with a strong family feel. We nurture and inspire everyone in our community to be the best they can. With strong traditional values and high expectations, we ignite a passion for life-long learning and enable our children to be confident, aspirational and creative learners.

## Our Vision Statement:

As a forward thinking school, our vision is to be an educational beacon that is self-sustaining and collaborative whilst maintaining our unique identity.

Our values and vision for all of our pupils underpins learning at Horningsham School. Our core set of values are used throughout school life to help foster positive and responsible attitudes and to guide the children in developing their own sense of self and inclusion.



# Our Curriculum

We have a rich and diverse curriculum at Horningsham, aimed at inspiring and capturing children's imagination. We work thematically, providing fun and exciting topics and memorable and real learning opportunities.



We enrich the curriculum with lots of clubs, exciting trips and a range of visitors; giving children quality first hand experiences. Learning has no limits or barriers for us – we welcome challenge and dynamic projects that help prepare our young learners for the skillset and aspirations they need for the future.



Our village and locality and beautiful setting give us another 'classroom' for learning without walls. Our strong links with Longleat also provide us with wonderful learning experiences and opportunities.

# Together we learn

As a community school, we engage with other schools, the local community and internationally through links with schools around the world. Parental engagement is valued and encouraged and we routinely provide learning opportunities for families and parents to support them supporting their child.

Our wider curriculum enables parents and children to learn together; be it in classroom contexts, through Pic'n'Mix homework or at family clubs.

*Your pupils and staff are clearly benefitting from the very rich curriculum you provide. Your use of experts and the very successful partnerships you have established are ensuring our pupils are offered a wide range of opportunities.*

Arts Council



*There is a purposeful, happy and productive buzz in the school from the start to the end of the day.*

Ofsted Nov 21

*Everyone in this tightly knit school community works together in harmony.*

Ofsted Nov 2021

## Our Pledge:



The staff is committed to ensuring that we do the best for every child.



Together  
we learn

## Horningsham Primary School

Church Street, Horningsham  
Nr Warminster  
Wiltshire, BA12 7LW

☎ 01985 844342

✉ [admin@horningsham.wilts.sch.uk](mailto:admin@horningsham.wilts.sch.uk)